

PLEASE CHECK WWW.MOLEX.COM FOR LATEST PART INFORMATION

Part Number: [0357500700](#)
Status: **Active**
Description: Ring Tongue Terminal for 16-20 AWG (0.53~1.38mm²), Stud Size 8 (M4), Un-Plated

Documents:

[Drawing \(PDF\)](#) [RoHS Certificate of Compliance \(PDF\)](#)
[Product Specification PS-35750-0300 \(PDF\)](#)

General

Product Family	Ring and Spade Terminals
Series	35750
Crimp Quality Equipment	Yes
Mil-Spec	N/A
Product Name	R (Ring)
Type	Ring

Physical

Barrel Type	Open
Insulation	None
Material - Plating Mating	Tin
Packaging Type	Reel
Stud Size	8 (M4)
Temperature Range - Operating	-40°C to +105°C
Termination Interface: Style	Crimp or Compression
Wire Insulation Diameter	3.20mm (.126") max.
Wire Size AWG	16, 18, 20
Wire Size mm ²	0.53 - 1.38

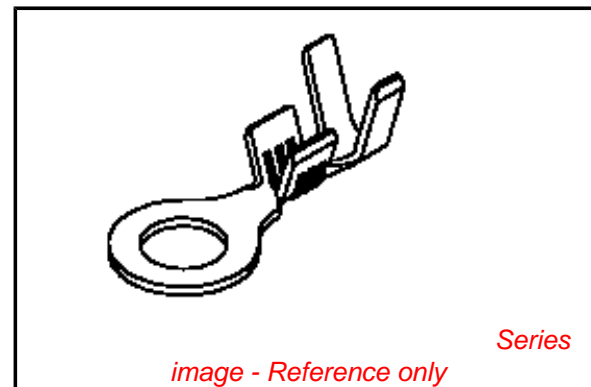
Electrical

Voltage - Maximum	300V DC
-------------------	---------

Material Info

Reference - Drawing Numbers

Product Specification	PS-35750-0300
Sales Drawing	SD-35750-07*0



EU RoHS

**ELV and RoHS
Compliant**
**REACH SVHC
Contains SVHC: No**
**Halogen-Free
Status**

China RoHS



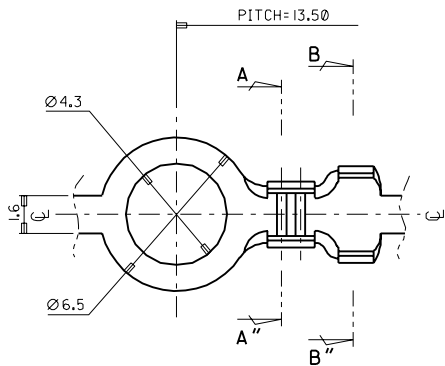
**Need more information on product
environmental compliance?**

Email productcompliance@molex.com
 For a multiple part number RoHS Certificate of Compliance, [click here](#)

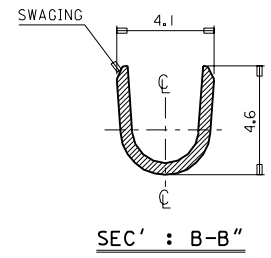
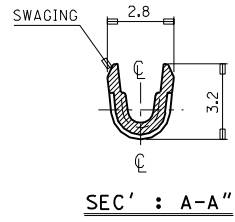
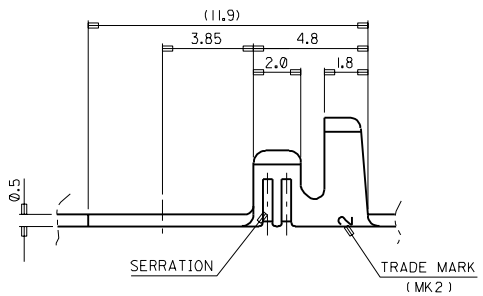
Please visit the [Contact Us](#) section for any non-product compliance questions.

Search Parts in this Series
[35750Series](#)

DO NOT SCALE DRAWING
 DIMENSION IN METRIC
 PROJECT NO.
 Ø3.2 RING TM'L
 SIMILAR ITEM
 EDP NO.
 ENG. NO.
 SD 35750-07#0



- NOTES
1. MATERIAL : BRASS . 0.5mm THICKNESS
 2. FINISH : 35750-0700 : UNPLATED
 35750-0710 : POST PLATED TIN
 35750-0740 : POST PLATED TIN-LEAD
 3. RECOMMENDED LENGTH OF WIRE STRIP IS 3.0-3.6mm.



ASS'Y PART		QTY/REEL OR PACK	SURFACE AREA	MATERIAL	SEE NOTES	WIRE RANGE	GENERAL TOLERANCES		
DESCRIPTION	ENG. NO.	10,000 Q'TY /REEL	MM ²	DIMENSION CLASSIFICATION		#20-#16	DIM. : +0.30		
REVISD	93-022			<input checked="" type="checkbox"/> : CRITICAL <input checked="" type="checkbox"/> : MAJOR <input type="checkbox"/> : MINOR () : REFERENCE		MM ² : 0.5-1.4	ANGLE : +0.20	REVISE ONLY ON CAD SYSTEM	
CAD REDRAWING	93-015			WIRE CRIMP WIDTH	INS. CRIMP WIDTH	INSULATION RANGE	TITLE:	Ø 4.3 RING TM'L (U/I) 1 of 1	
REVISION RECORD	ECN	DR. / CHK.	DATE	DIE FEED	APPL FEED	WBDW	IBDW	APP'D BY	
				13.50				SCALE 7/1	
							ENG. NO.	SD 35750-07#0	REV C